



BRADFIELD COLLEGE ENTERPRISES

Bradfield College: **Hillside House.**

Parts of the building date back to 1878 when it was built as a private dwelling. It was enlarged in 1888 and became the Junior School until 1920, at which point it became the sixth School boarding house. In 2001 Hillside was extensively refurbished and the accommodation now comprises either single or twin rooms, all of which have sinks and fitted bedroom furniture. There are two small kitchen areas on each floor for preparing drinks and snacks. Each bathroom and toilet facility is shared between three bed/study rooms and all of the rooms have individual design and character.

Hillside is the only boarding house to have its own outdoor grassed recreation pitch and is located close to both the centre of the village and the Sports Complex, making it ideal for small, sporting groups. The modern interior gives residents a common



room with excellent facilities and a computer centre with email and web access.

Bedrooms	Total
Single with En-suite	1
Single with Hand Basin	32
Single	-
Twin with En-suite	-
Twin with Hand Basin	6
Twin	-
Total Beds	45
Total Bedrooms	39
Maximum Occupancy	45
Notes: A room needs to be reserved for a locum house parent (this will not be required if the house parent is a resident) Televisions and Videos may be available	

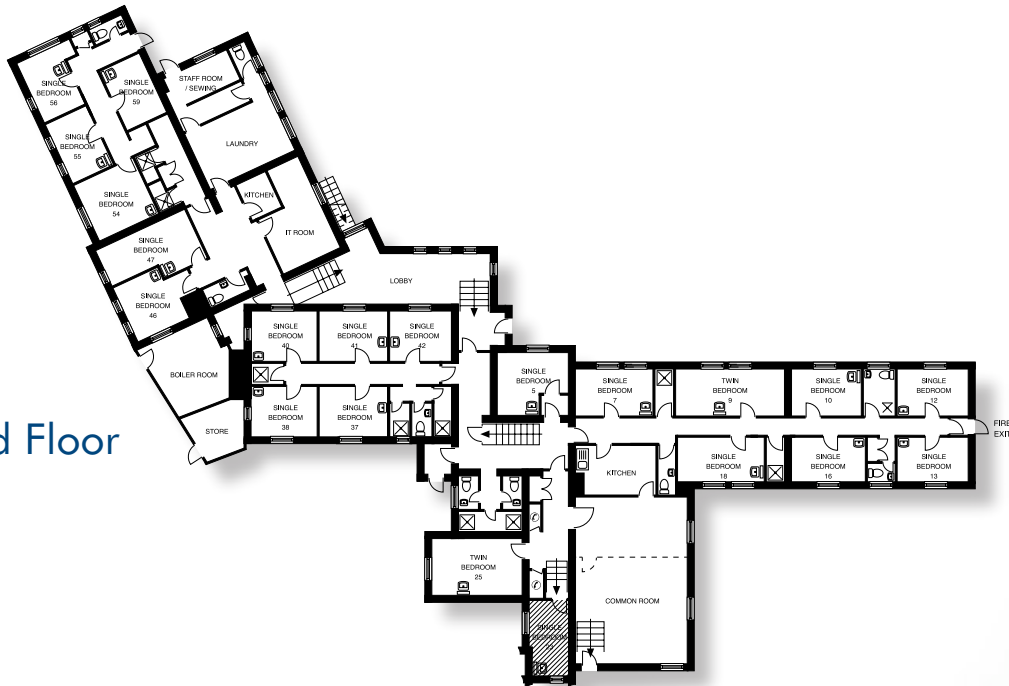
Facilities	Total
Toilets (excluding En-suites)	17
Showers (excluding En-suites)	21
Baths (excluding En-suites)	1
Disabled Toilets (excluding En-suites)	-
Disabled Showers (excluding En-suites)	-
Common Rooms	1
Kitchens	4
Pool Table	1
Table Tennis	-
Laundry	Yes
Ironing Board	Yes
Parking	6*

*Ample parking is available in the main carpark

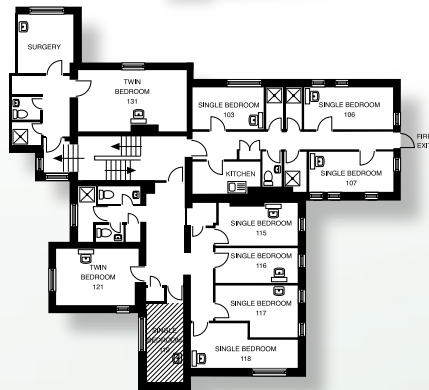
BRADFIELD COLLEGE ENTERPRISES LIMITED

Bradfield, Reading, Berkshire RG7 6AU
 Telephone: 0118 964 4570 Fax: 0118 964 4591
 Email: enterprises@bradfieldcollege.org.uk

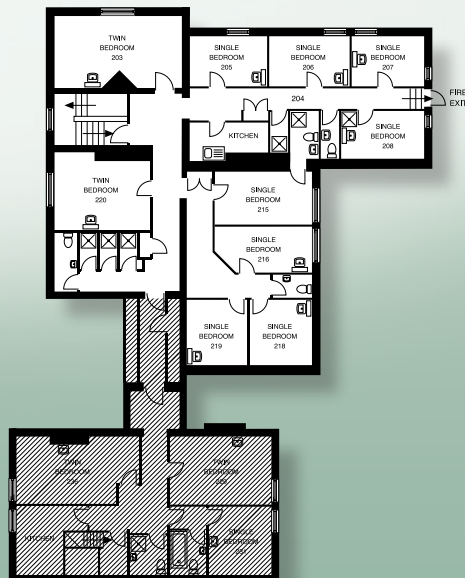
Bradfield College: **Hillside House.**



Ground Floor



First Floor



Second Floor