



# BRADFIELD COLLEGE ENTERPRISES

## Bradfield College: **Faulkner's.**

Faulkner's has a capacity of 121, primarily consisting of 54 twin En-suite rooms. After opening in 2000 for use by the college as a boarding house specifically for its youngest students, Faulkner's was extended in 2006 to meet the huge demand for pupil places at Bradfield.

The substantial lobby at the front of the house doubles as a well equipped games room and common area, benefiting from an adjoined TV room with kitchen facilities. This is ideal as a meeting and recreation space for adults and children alike.

Faulkner's is situated on the hill top opposite the House on the Hill and now forms the central axis of the School through the main gates. It is close to the All Weather Pitches as well as the Hill 2 grassed



area making it particularly well resourced for recreation purposes.

Bedrooms	Total
Single Disabled	2
Twin with En-suite	54
Twin with Hand Basin	-
Twin	-
Three bed with En-suite	1
Four bed with En-suite	2
<b>Total Beds</b>	<b>121</b>
<b>Total Bedrooms</b>	<b>59</b>
<b>Maximum Occupancy</b>	<b>121</b>
<small>Notes:            A room needs to be reserved for a locum house parent (this will not be required if the house parent is a resident).            Televisions and Videos may be available.</small>	

Facilities	Total
Toilets (excluding En-suites)	2
Showers (excluding En-suites)	-
Baths (excluding En-suites)	2
Disabled Toilets (excluding En-suites)	-
Common Rooms	2
Kitchens	6
Pool Table	2
Table Tennis/Air Hockey	2
Table Football	1
Laundry	Yes
Ironing Board	Yes
Parking	5*

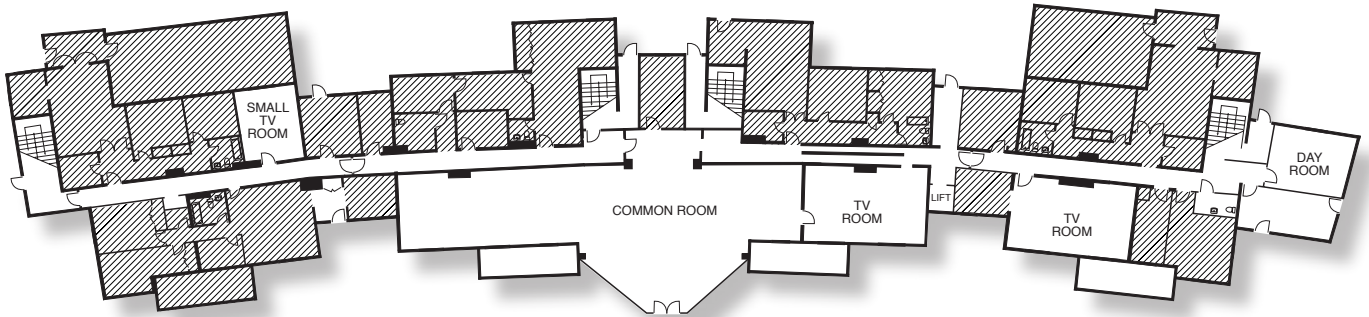
\*Ample parking is available in the main carpark

BRADFIELD COLLEGE ENTERPRISES LIMITED

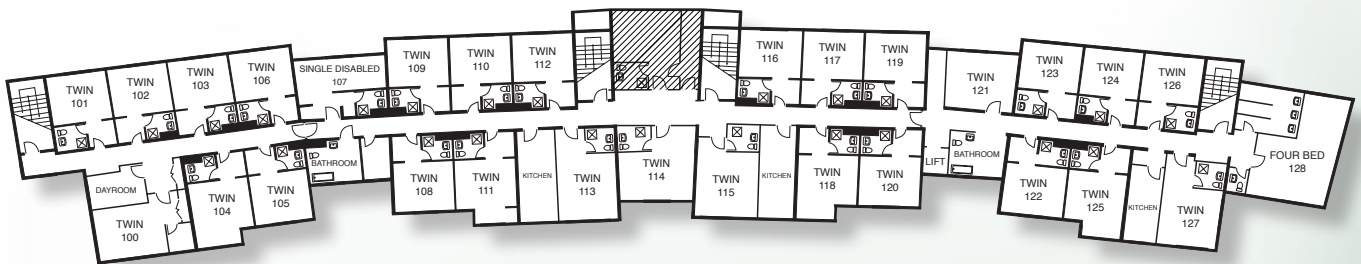
Bradfield, Reading, Berkshire RG7 6AU  
 Telephone: 0118 964 4570 Fax: 0118 964 4591  
 Email: [enterprises@bradfieldcollege.org.uk](mailto:enterprises@bradfieldcollege.org.uk)

# Bradfield College: **Faulkner's.**

## Ground Floor



## First Floor



## Second Floor

