



BRADFIELD COLLEGE ENTERPRISES

Bradfield College: Stone House.

Stone House along with Loyd and College Houses described the entire School living accommodation until 1889, when more buildings were added to the campus. It was originally located in the Northern section of the School Quad that is the current College House. This building dates back to 1869 and is notable for its architecture and in particular its ornate windows. Note the exceptional rose window in the South wall.

In 1980 Stone House was relocated into the purpose built building opposite the main entrance to the College.

The building was refurbished in 1999 and now its single or twin rooms have sinks and fitted bedroom furniture. Each bathroom and toilet facility is shared between three bed/study rooms. There are two small kitchen areas for preparing drinks and snacks.

Stone House is a single storey building with a very large common room, a computer centre with email



and web access and a games area. Stone House is designed for the easy segregation of mixed sex groups. Its location makes it particularly popular with a variety of educational and sports based residents.

Bedrooms	Total
Single with En-suite	1
Single with Hand Basin	38
Single	-
Twin with En-suite	-
Twin with Hand Basin	6
Twin	-
Total Beds	51
Total Bedrooms	45
Maximum Occupancy	51
Notes: A room needs to be reserved for a locum house parent (this will not be required if the house parent is a resident). Televisions and Videos may be available.	

Facilities	Total
Toilets (excluding En-suites)	15
Showers (excluding En-suites)	19
Baths (excluding En-suites)	-
Disabled Toilets (excluding En-suites)	-
Disabled Showers (excluding En-suites)	-
Common Rooms	1
Kitchens	3
Pool Table	1
Table Tennis	-
Laundry	Yes
Ironing Board	Yes
Parking	8*

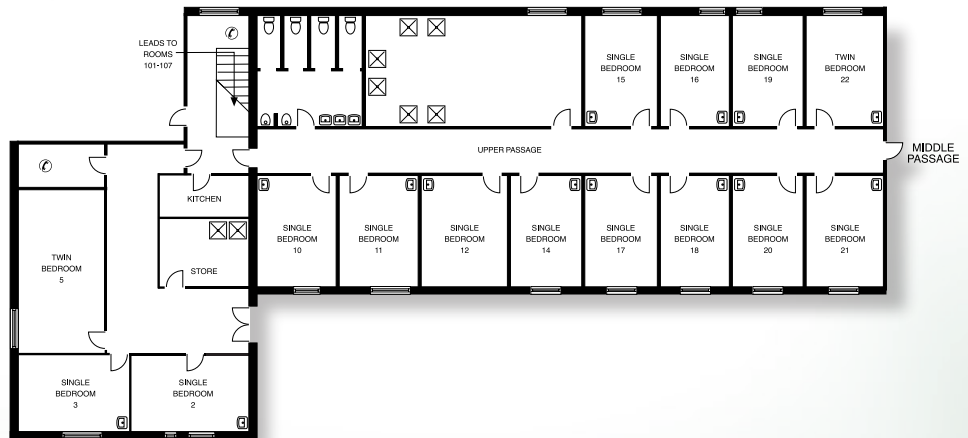
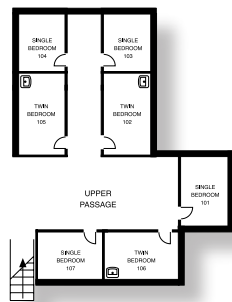
*Ample parking is available in the main carpark

BRADFIELD COLLEGE ENTERPRISES LIMITED

Bradfield, Reading, Berkshire RG7 6AU
 Telephone: 0118 964 4570 Fax: 0118 964 4591
 Email: enterprises@bradfieldcollege.org.uk

Bradfield College: Stone House.

Upper Passage



Middle and lower Passage

