



# BRADFIELD COLLEGE ENTERPRISES

## Bradfield College: **Palmer House.**

Having been opened as the first girl's boarding house in 1989, Palmer House was expanded in 2008. It has a tasteful modern design and is predominantly a mixture of single and twin rooms with en-suite facilities. There is also a spacious open plan common room, plus a kitchen area on each floor for preparing drinks and snacks.

The House is well-positioned, being alongside many of the other boarding houses on the hillside opposite the main entrance to the College and within a few minutes walk of all the main amenities that are offered on the campus.



Bedrooms	Total
Single with En-suite	23
Single with Hand Basin	-
Twin with En-suite	14
Twin with Hand Basin	-
Four Bed	2
<b>Total Beds</b>	<b>59</b>
<b>Total Bedrooms</b>	<b>39</b>
<b>Maximum Occupancy</b>	<b>59</b>
Notes: A room needs to be reserved for a locum house parent (this will not be required if the house parent is a resident) Televisions and Videos may be available	

Facilities	Total
Toilets (excluding En-suites)	2
Showers (excluding En-suites)	-
Baths (excluding En-suites)	2
Disabled Toilets (excluding En-suites)	2
Disabled Twin Rooms (En-suites)	2
Common Rooms	-
Kitchens	3
Pool Table	-
Table Tennis	-
Laundry	Yes
Ironing Board	Yes
Parking	4*

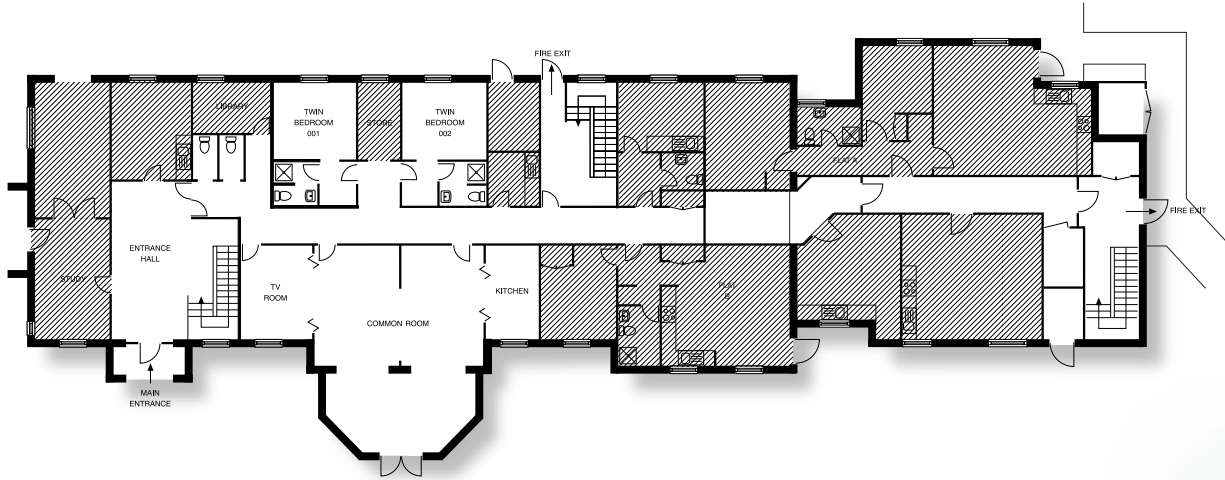
\*Ample parking is available in the main carpark

BRADFIELD COLLEGE ENTERPRISES LIMITED

Bradfield, Reading, Berkshire RG7 6AU  
 Telephone: 0118 964 4570 Fax: 0118 964 4591  
 Email: [enterprises@bradfieldcollege.org.uk](mailto:enterprises@bradfieldcollege.org.uk)

# Bradfield College: **Palmer House.**

## Ground Floor



## First Floor



## Second Floor

