



# BRADFIELD COLLEGE ENTERPRISES

## Bradfield College: **Stevens House**

Having been opened in 1996, Stevens House was expanded in 2009. It is a tasteful modern extension to a 19<sup>th</sup> century private dwelling that had latterly been used as the School Sanatorium (medical centre). It is predominantly a mixture of single and twin rooms with en-suite facilities and is well-presented throughout.

There is a large open plan common room and a spacious TV room on the ground floor, plus a kitchen area on each floor for preparing drinks and snacks.

The House is well-positioned, being alongside many of the other boarding houses on the hillside opposite the main entrance to the Sports Complex, and is within a few minutes' walk of all the main amenities that are offered on the campus.



Bedrooms	Total
Single with en-suite	20
Single with hand basin	–
Single	–
Twin with en-suite	16
Quad	2
<b>Total beds</b>	<b>60</b>
<b>Total bedrooms</b>	<b>38</b>
<b>Maximum occupancy</b>	<b>60</b>
Notes: A room needs to be reserved for a locum house parent (this will not be required if the house parent is a resident). Televisions and videos may be available.	

Facilities	Total
Toilets (excluding en-suites)	6
Showers (excluding en-suites)	1
Baths (excluding en-suites)	2
Disabled toilets (excluding en-suites)	1
Disabled showers (excluding en-suites)	–
Common rooms/TV rooms	2
Kitchens	3
Pool table	–
Table tennis	–
Laundry	Yes
Ironing board	Yes
Parking	5*

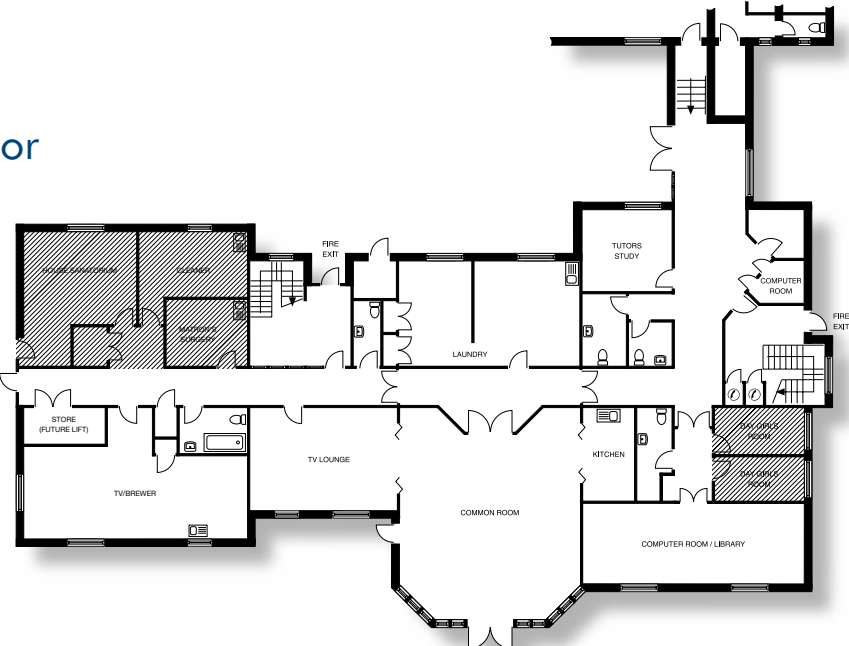
\*Ample parking is available in the main carpark

BRADFIELD COLLEGE ENTERPRISES LIMITED

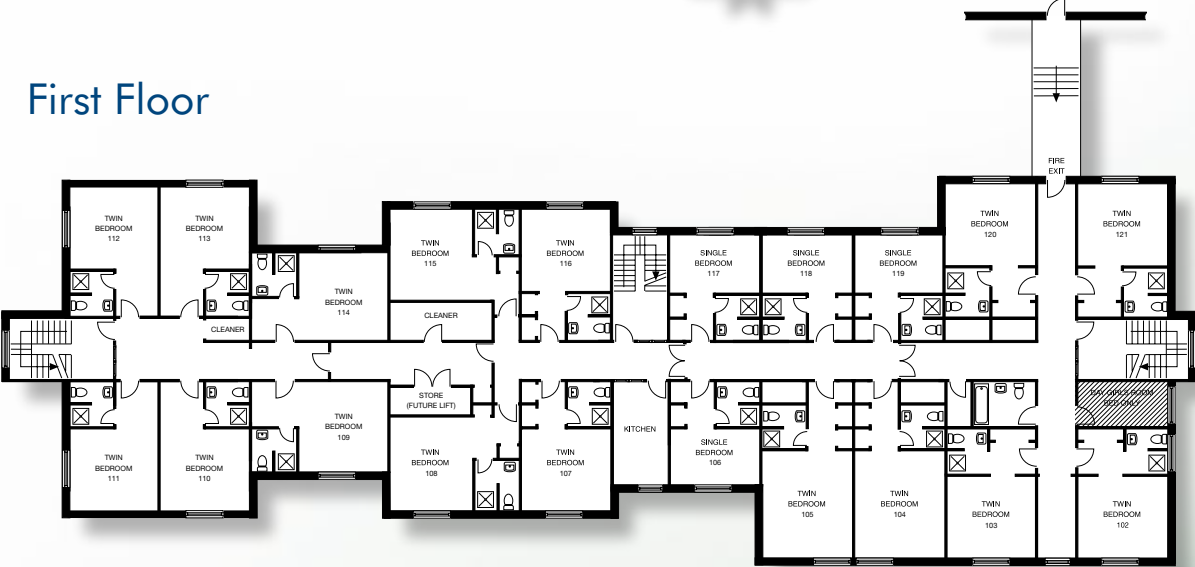
Bradfield, Reading, Berkshire RG7 6AU  
 Telephone: 0118 964 4570 Fax: 0118 964 4591  
 Email: [enterprises@bradfieldcollege.org.uk](mailto:enterprises@bradfieldcollege.org.uk)

# Bradfield College: **Stevens House**

Ground Floor



First Floor



Second Floor

