



# BRADFIELD COLLEGE ENTERPRISES

## Bradfield College: **Stanley House.**

Originally a Prep School that moved away from London during the Great War, Stanley is housed in a charming building which has seen many changes over the last century. In 2006 the house was completely refurbished and was subject to some significant and tasteful renovation to become Bradfield's first Boarding House for junior girls.

Stanley's accommodation is primarily single and twin bedrooms with hand basins. Showers and WCs are shared, however they are situated conveniently for each room.

Stanley is located on the hillside, surrounded by mature trees in the centre of the village commanding views over the beautiful Pang Valley. It is near to the Dining Hall and other educational facilities but is also situated in close proximity to the other Boarding Houses.



Stanley offers a range of modern facilities including internet access points in rooms, electronic entry system and a plasma screen TV.

Bedrooms	Total
Single with En-suite	-
Single with Hand Basin	30
Single	-
Twin with En-suite	-
Twin with Hand Basin	9
Treble with Hand Basin	-
<b>Total Beds</b>	<b>48</b>
<b>Total Bedrooms</b>	<b>39</b>
<b>Maximum Occupancy</b>	<b>50</b>
Notes: A room needs to be reserved for a locum house parent (this will not be required if the house parent is a resident) Televisions and Videos may be available	

Facilities	Total
Toilets (excluding En-suites)	15
Showers (excluding En-suites)	17
Baths (excluding En-suites)	2
Disabled Toilets (excluding En-suites)	-
Disabled Showers (excluding En-suites)	-
Common Rooms	1
Kitchens	-
Pool Table	-
Table Tennis	-
Laundry	Yes
Ironing Board	Yes
Parking	2*

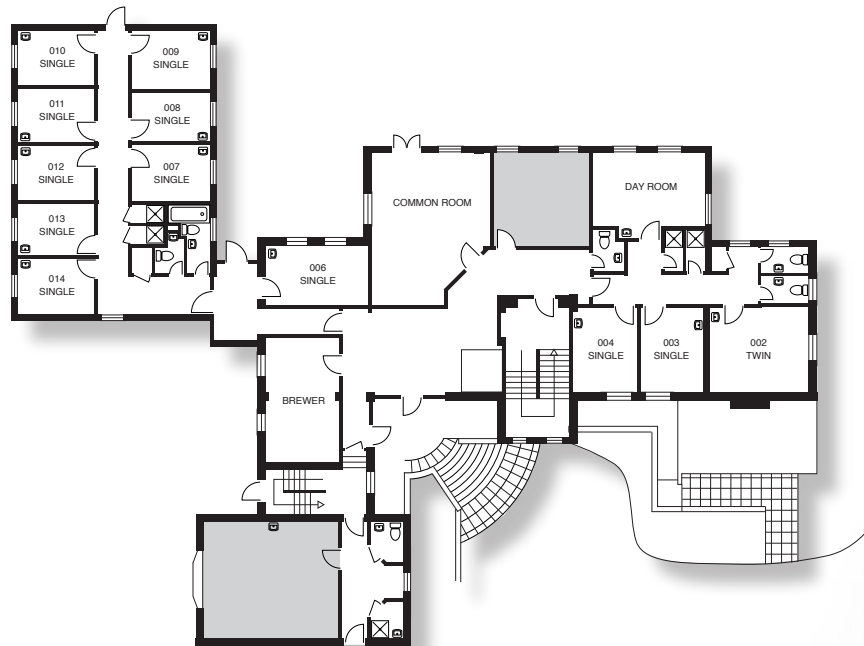
\*Ample parking is available in the main carpark

BRADFIELD COLLEGE ENTERPRISES LIMITED

Bradfield, Reading, Berkshire RG7 6AU  
 Telephone: 0118 964 4570 Fax: 0118 964 4591  
 Email: [enterprises@bradfieldcollege.org.uk](mailto:enterprises@bradfieldcollege.org.uk)

# Bradfield College: **Stanley House.**

Ground Floor



First Floor



Second Floor

